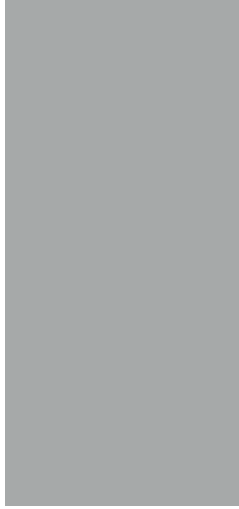
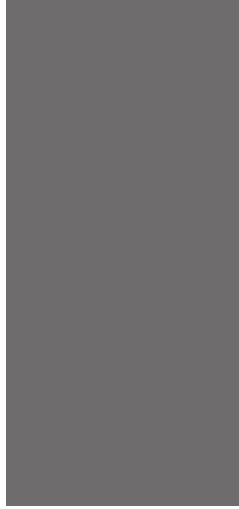


Bone White  
2103



Cityscape  
2208



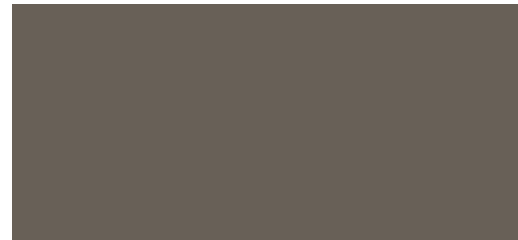
Dark Gray  
2217



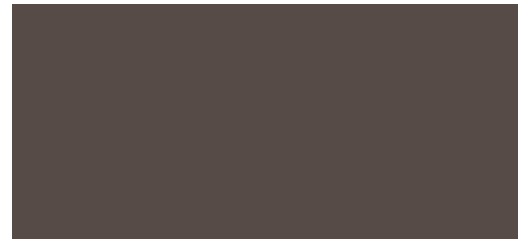
Charcoal  
2206



Sandstone  
2340



Burnished Slate  
2705



Mansard Brown  
2724



Dark Bronze  
2716



Gallery Blue  
2621



Forest Green  
2520



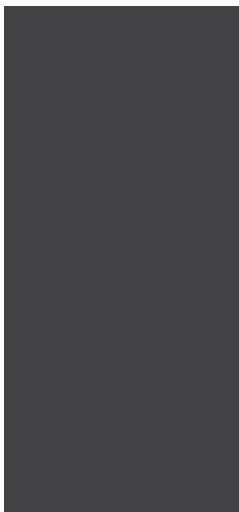
# FLUROPON<sup>®</sup> Color Guide

The Fluropon<sup>®</sup> Paint System's proven performance and durability offers color, confidence and collaboration to bring every project successfully to life. The Fluropon<sup>®</sup> Family of metal coatings delivered the advantages of 70% PVDF coating:

- Outstanding color and gloss retention
- Extreme weathering performance
- Resistance to dirt, stains, chalk and fade
- Graffiti resistance that meets ASTM standards

**DISCLAIMER:** This color chart is to be used as a guide only. These colors are a close approximation, but due to various factors, they may not be exact. For specific color-matching, samples are available by request.

Matte Black  
2825



Burgundy  
2404



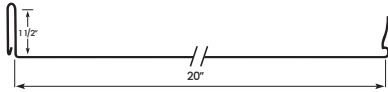
Colonial Red  
2413



# FLUROPON<sup>®</sup>

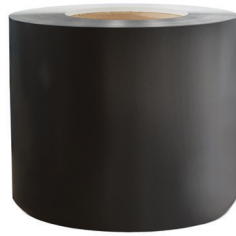
## Paint System

### Everseam<sup>®</sup>



### Coil

24 Gauge  
40" Grade 50 / 48" Grade 50  
20" Grade 50 / 24" Grade 50



PROFILE	Everseam <sup>®</sup>	
SERIES	EVERSEAM24	COIL
GAUGE	24 Gauge	24 Gauge
SUBSTRATE	Galvalume or Galvanized	Galvalume or Galvanized
FILM INTEGRITY	35 Years	35 Years
FADE / CHALK	35 Years	35 Years
PERFORMANCE	UP TO 25 Years	N/A

All profiles are available unpainted with acrylic coating for a mill finish appearance.

### TRADEMARKS

Fluropon<sup>®</sup> is a registered trademark of The Sherwin-Williams Company  
Everseam<sup>®</sup> is a registered trademark of Everlast Roofing, Inc.



LEBANON, PA  
888.339.0059

ORWELL, OH  
877.866.9955

HOWE, IN  
866.562.3782

BRIDGTON, ME  
800.677.2060